



POPFOLD - GAME SERIES

#003 ENCLAVE TROOPER

THE CHOSEN SURVIVORS

"THE PRICE OF FREEDOM IS ETERNAL VIGILANCE"

OH HEY, INSTRUCTIONS !

Cubefold is a personal fan project and does not charge for any downloads of its 'POPFOLD' range of figures nor does it sell any individual printed formats. All featured characters and/or logos belong to their respective intellectual property holders. Please notify Cubefold if you noticed anyone selling any of the 'POPFOLD' figures or printing them for commercial purposes.

A PREPARATIONS



RECOMMENDED PAPER: 120 - 160 gsm A4, Matte White



RECOMMENDED ADHESIVE: Double sided tape
Clear adhesives *



RECOMMENDED TOOLS: Scissors / cutter
Scorer / dry ball point pen
Ruler
Cutting Mat

* While you can use water based / wet adhesives, it could potentially warp the paper and damage the ink depending on paper thickness.



Please do provide assistance and guidance should you have a young child attempting this project and take care with cutting and assembly.

B PRINTING

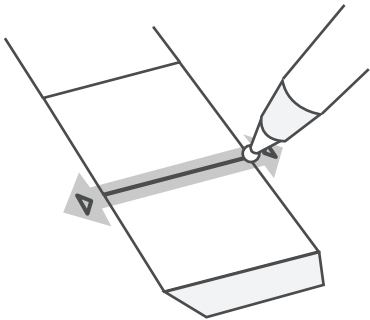
RECOMMENDED PRINTER: Inkjet colour printer

PRINT QUALITY: Set to 'High Quality'

ADDITIONAL SETTING: Set print from page 3 - 5
Borderless printing / fit to page

EXTRA NOTE: If the printed colours are too light or not to your liking, set Paper Type to 'Photo Paper'

1 SCORING



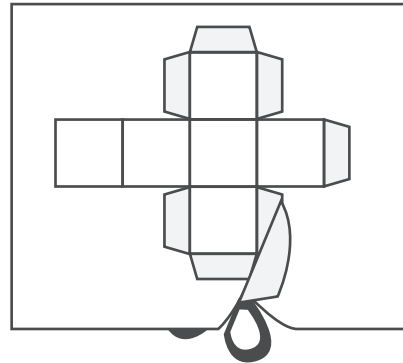
 - SCORING REFERENCE POINT

On the page there will be marking guides which signifies the fold points of each part.

These are placed to give you a guide to mark and using your ruler & scorer, carefully trace lightly over the folding lines neatly. Repeat this process until all lines are scored and judge accordingly.

This will help you fold each facing easier during stage 3 to make up each part.

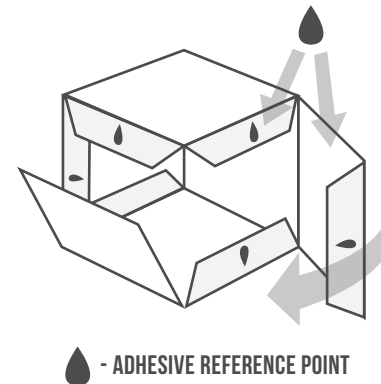
2 CUTTING



Identify each piece of the figure on the printed sheet. Then cut out the pieces separately from the page neatly and as carefully as possible.

It is recommended that you group up any pieces that make up a larger part of the figure away from the others.

3 FOLDING



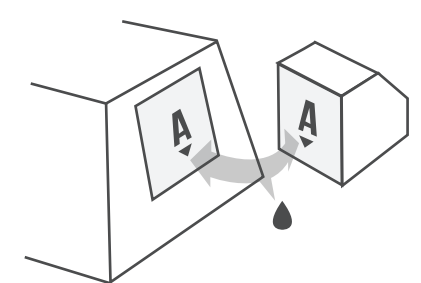
 - ADHESIVE REFERENCE POINT

Fold each facing into shape and align each flap into position in line with the edges to form the rough shape.

Once you have a good idea how the pieces will fold up, apply adhesive onto the areas marked and stick carefully.

Repeat this process until all the pieces are folded and stuck into place before the next and last step.

4 ASSEMBLY



 - DIRECTION REFERENCE POINT

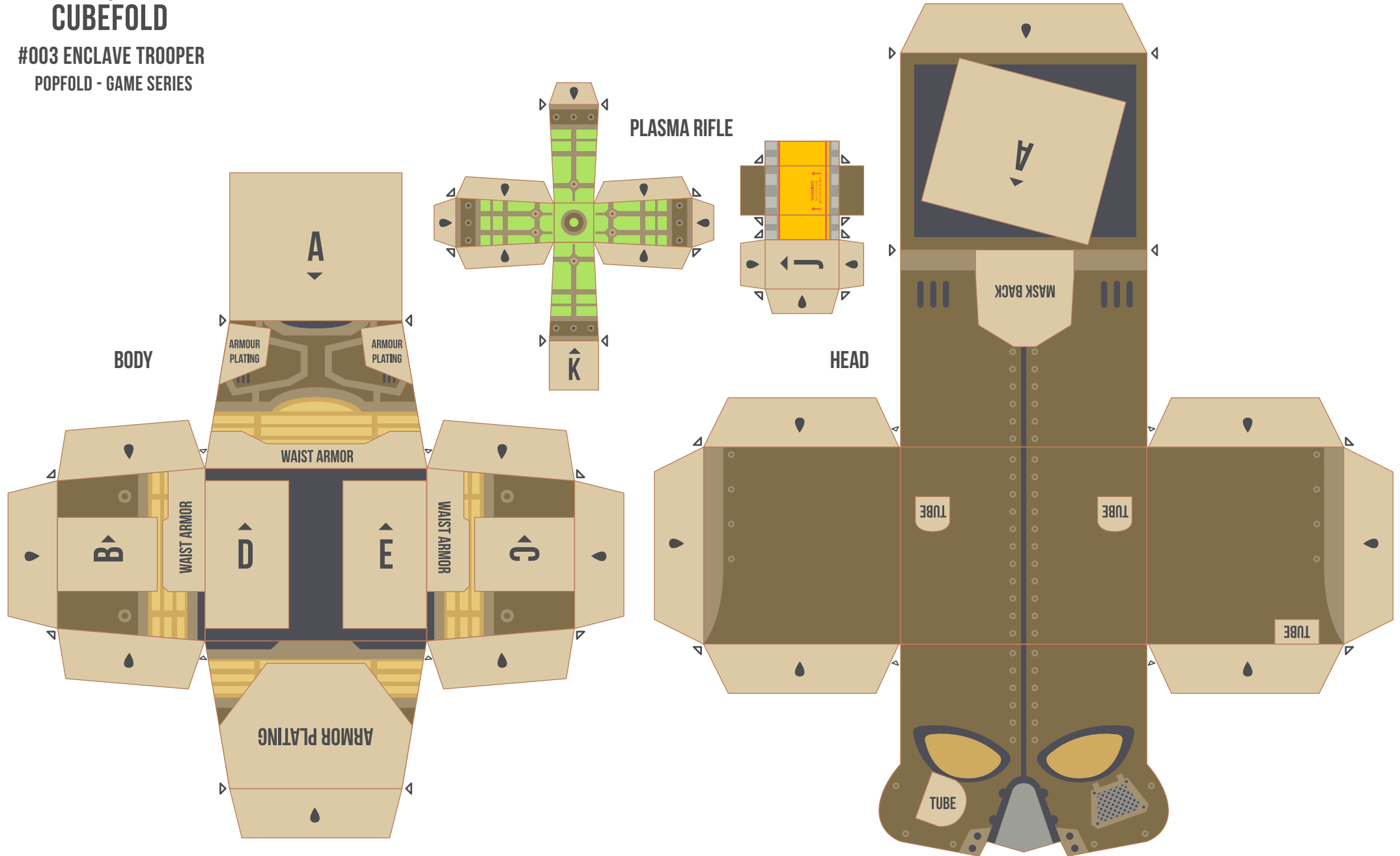
Stick the folded pieces accordingly to the bounding box marked by the corresponding alphabet and following the direction of the arrow marked. Repeat this process until figure is completed.

Thank you for crafting and hope you enjoyed the time making them for display. Please feel free to send Cubefold any comment and feedback, or just saying hi - they are highly appreciated !



CUBEFOLD

#003 ENCLAVE TROOPER
POPFOLD - GAME SERIES

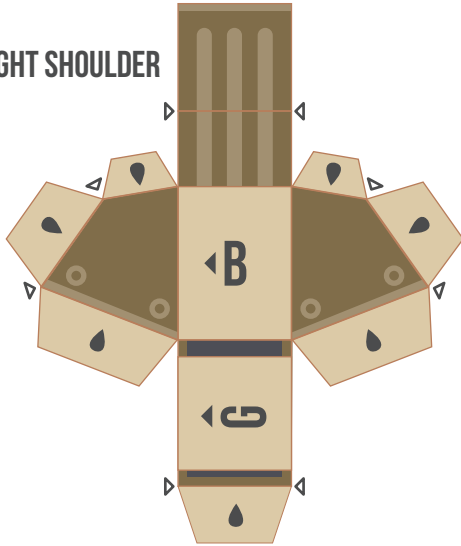




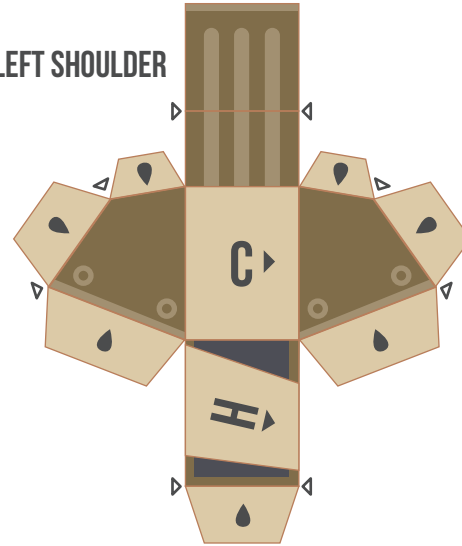
CUBEFOLD

#003 ENCLAVE TROOPER
POPFOLD - GAME SERIES

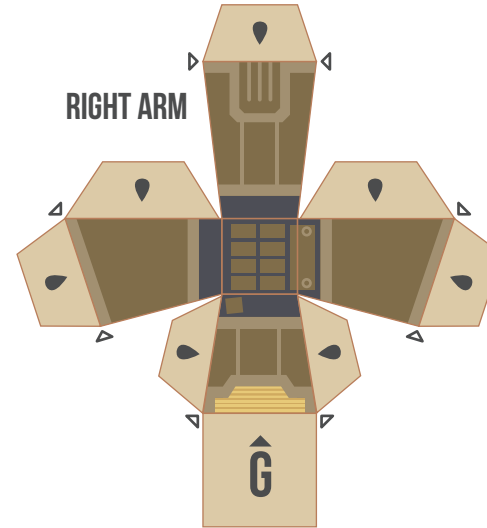
RIGHT SHOULDER



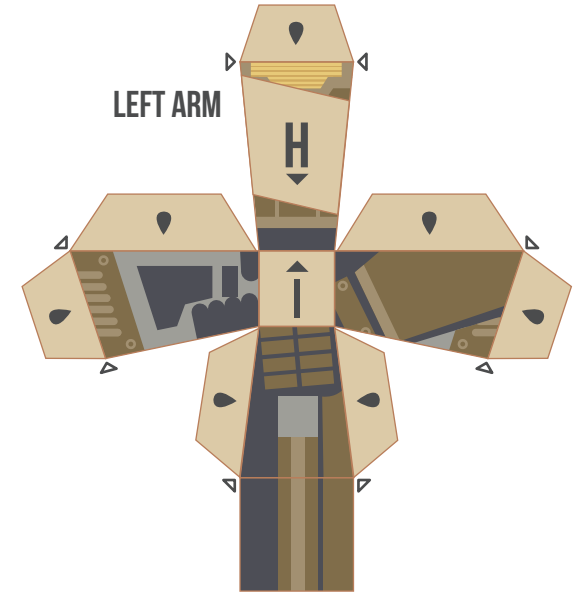
LEFT SHOULDER



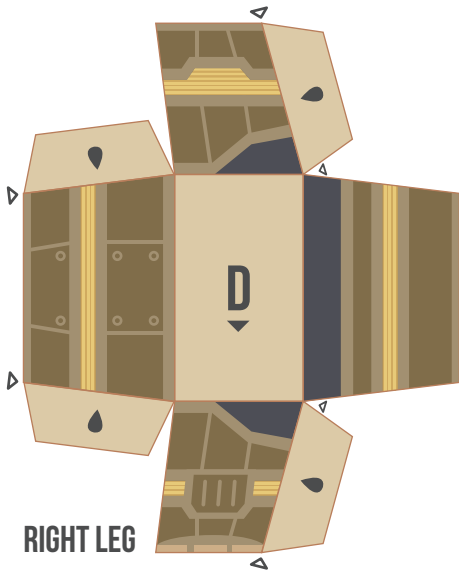
RIGHT ARM



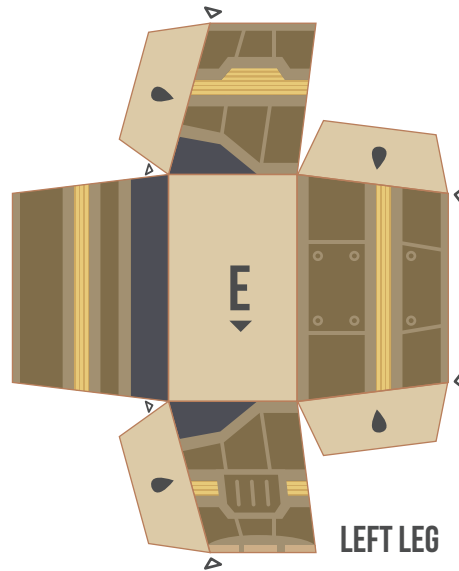
LEFT ARM



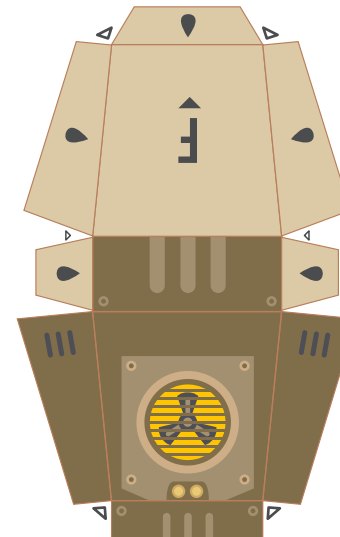
D



E

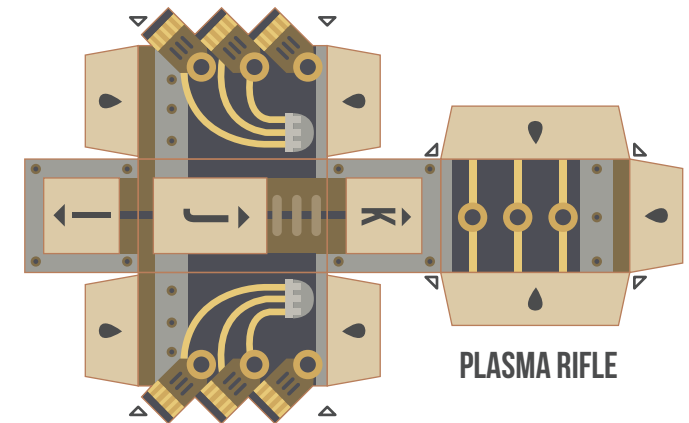


F



BACKPACK

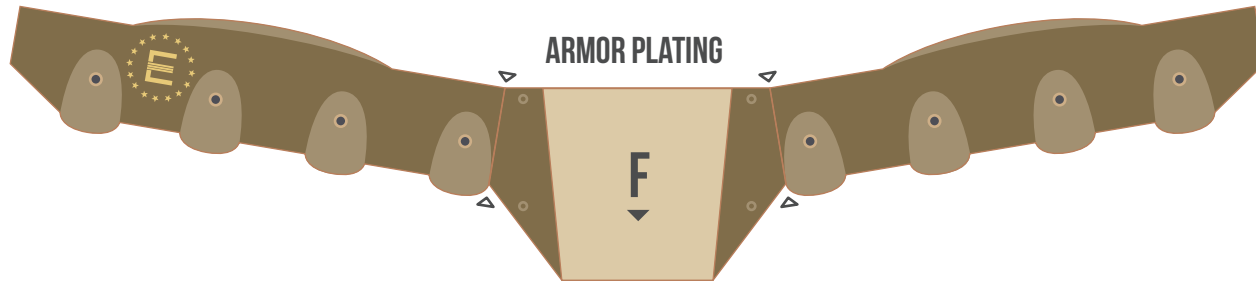
PLASMA RIFLE





CUBEFOLD

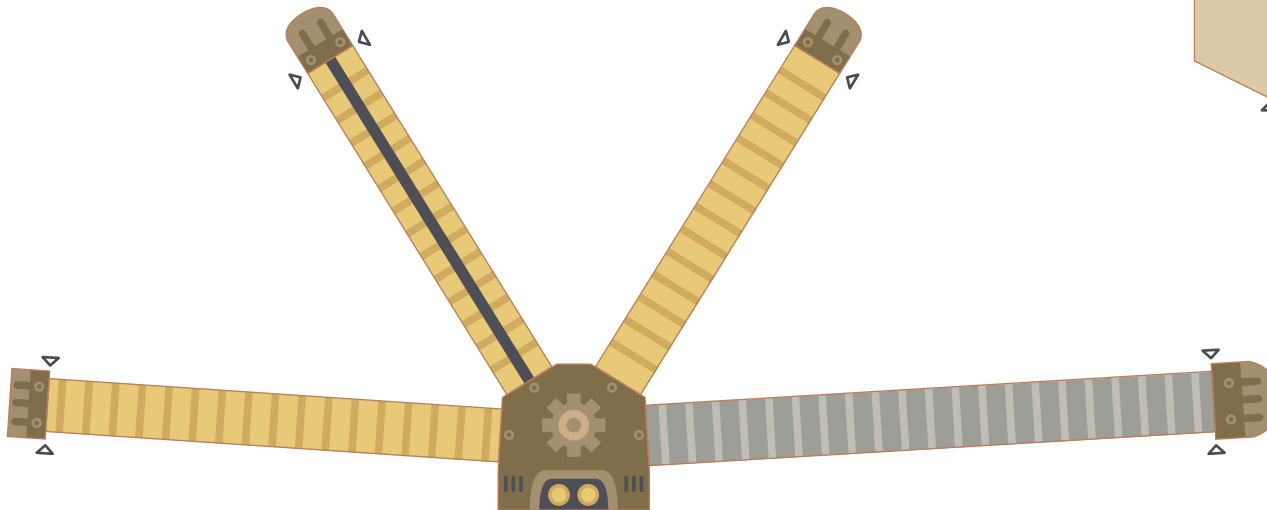
#003 ENCLAVE TROOPER
POPFOLD - GAME SERIES



ARMOR PLATING

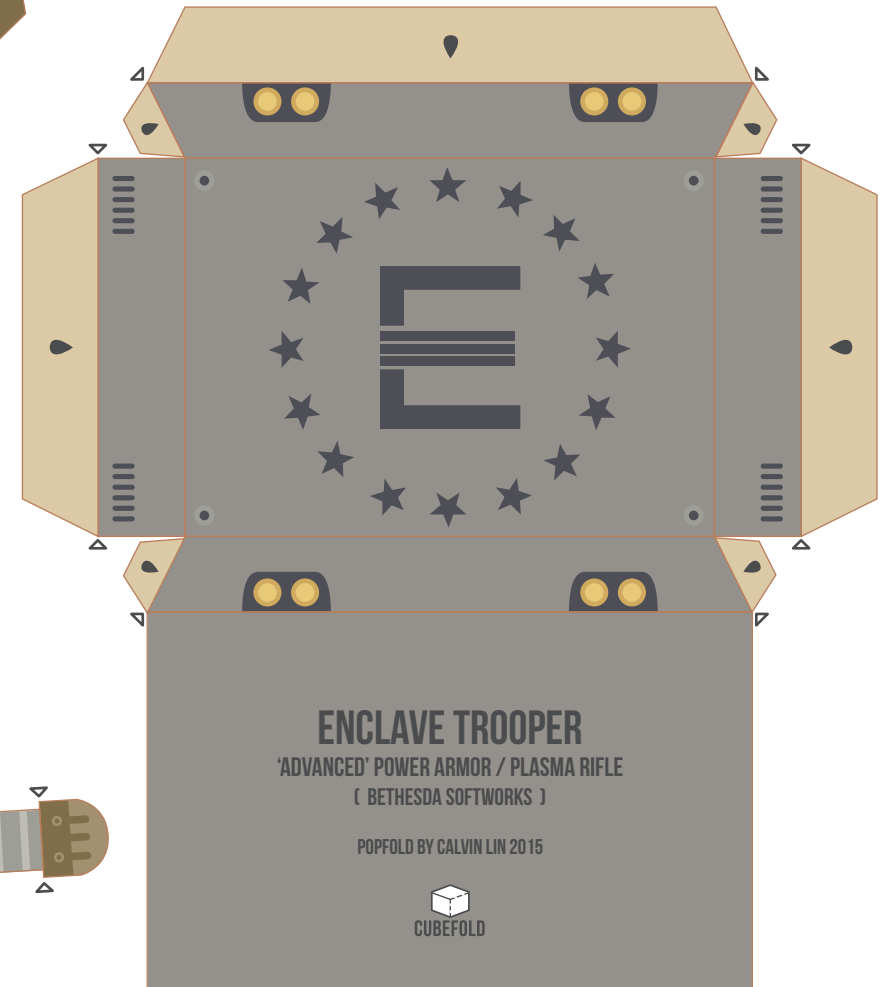


WAIST ARMOR



MASK BACK

DISPLAY BASE (OPTIONAL)



ENCLAVE TROOPER
'ADVANCED' POWER ARMOR / PLASMA RIFLE
(BETHESDA SOFTWARES)

POPFOLD BY CALVIN LIN 2015



CUBEFOLD